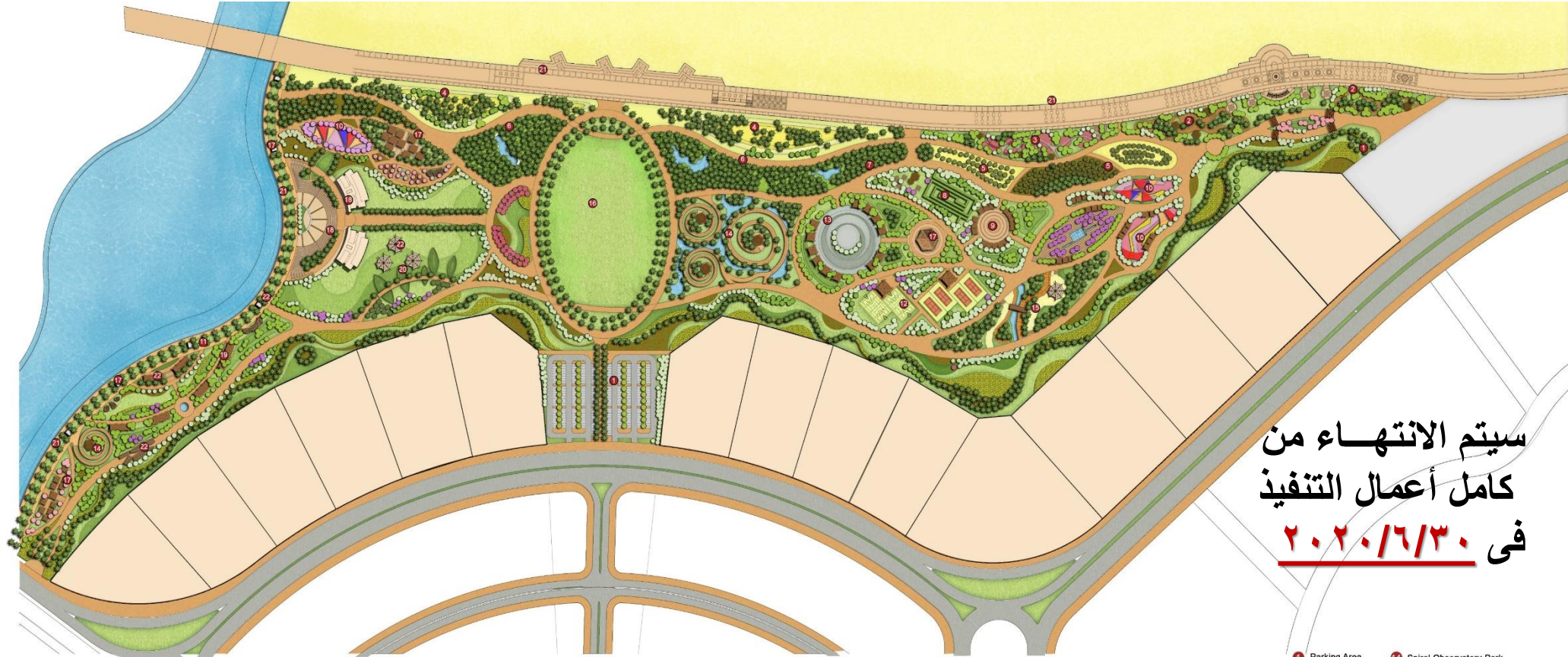


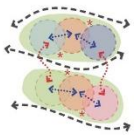
الموقع العام لحديقة العلمين



سيتم الانتهاء من
كامل أعمال التنفيذ
في ٢٠٢٠/٦/٣٠

DESIGN PRINCIPLES

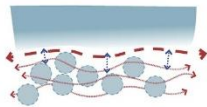
PLACE-MAKING



The first principle is to create spaces that are inviting and welcoming to every member of the family or the community male or female, child, adult or even an elderly person - able or disabled.

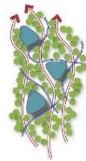
These spaces are places that encourages many or regulated and structured activities. These activities that are well linked through a network of footpaths that are 'booked' with shaded seating areas, not many other park-like functions.

CONNECTIVITY



All the places created are strongly linked together by a network of jogging and biking track to the places are not the isolated disconnected islands. Also all the paths are then linked to the main program to link the Eastern Part of the Central Park to the Western Part, furthermore to the whole network of parks and eventually to the entire City.

SCULPTURING



As a concept of connectivity whether in plan or in a use, all buildings, pergolas or spaces are a result of sculpting through project using masses of circulation and paths. This is to create a futuristic identity for the project.

ANATOMY OF PLAN



The sea that shapes the city and determines the structure and city program also shapes the central park anatomy.

- 1 Parking Area
- 2 Bike Park
- 3 Fitness Park
- 4 Sand Dunes Park
- 5 Fig and Olive Park
- 6 Palm Groves Park
- 7 Challenge Park
- 8 Maze Park
- 9 Music Park
- 10 Kids area Park
- 11 Water Park
- 12 Play Field Park
- 13 Skating Park
- 14 Spiral Observatory Park
- 15 Mountain and Rockey Park
- 16 The Total Score Park
Concerts - Events- Exhibitions Stalls -
Sculpture By The Sea Alamein
- 17 Food Courts Park
- 18 Amphitheater and Terrace Restaurants
- 19 Picnic Pergolas
- 20 Green Dunes Park
- 21 Cornish Promenade
- 22 Shade structure